

YourBell



INEXPENSIVE, RELIABLE USB PRODUCTS

www.bcsideas.com

Table of Contents

General Information.....	3
Installation.....	3
Software.....	3
Hardware.....	5
Figure 2 – Hardware Over View	5
Figure 3 – Preferred Wiring – All Possible Components	7
Figure 4 – Preferred Wiring – 1 Button Input	8
Figure 5 – Single Button Wire – 2 Button Input	9
Figure 6 – Single Button Wire – 1 Button Input	10
Electrical Description.....	11
Warranty.....	12

General Information

Congratulations on your purchase of the YourBell. The door chime without limits. The YourBell can be completely personalized by the owner in just a few simple steps. The use of MMC (MultiMediaCard)/SD (Secure Digital) flash card technology allows for an almost unlimited number of quality audio snippets to play on the YourBell. The possibilities are endless. The YourBell will play MP3s. The songs can be acquired from the internet or ripped from your favorite CD. The songs can be edited to length and converted to MP3 format using the software package Audacity. Download it from the following website. <http://sourceforge.net/projects/audacity/files/>. Record your own creations using a microphone, a computer's sound card and Audacity. There are many examples residing on our website at http://www.bcsideas.com/support_ce.php.

The YourBell has two inputs. Both inputs support a push button, electromechanical relay, solid state relay, the Ring, lighted push button with incandescent bulb, lighted push button with LED light and various types of sensors as inputs. Each input can be set to accept NO (normally open) or NC (normally closed) contacts. Each input will play its own list of sounds. When an input is received the unit will play the next sound in the list for that input. It will continue to play to the end w/o interruption. If another input is received while the unit is playing it will be ignored. When the sound is done playing the YourBell will service the next input. If the input has a long duration (a door switch perhaps, the door is held open for awhile) it will not be seen as an input again until the input is reset first. The length of an input will not affect the servicing of the other inputs. The only time inputs are ignored is while the unit is playing.

The YourBell has a powerful amplifier section that can drive two 8 Ohm external speakers The volume is controlled using a potentiometer.

Check our website at http://www.bcsideas.com/support_ce.php for the most up to date information and instructional videos.

Installation

Software

YourBell programming software

Go to the following web page : http://www.bcsideas.com/support_ce.php

Scroll down to the table labeled "DYB2003".

Under the heading "*Software Installation*".

For Windows

Go to the line labeled :

"Windows - Programming Software Version 3.05.

Win8+ may need to install the Jave SE (Runtime Environment)"

For MAC OSX

Go to the line labeled :

"MAC OS X - Programming Software Version 3.01.

Mac OSX Yosemite+ may need to install the Jave SE (Runtime Environment)."

Download the associated ZIP file to your machine and install the program.

Audio editing software

We highly recommend Audacity. Download it from the following website.

<http://sourceforge.net/projects/audacity/files/>

Video Tutorials

Scroll down to the table labeled :

"Documentation".

Programming Software Tutorial

Go to the line labeled

"Tutorial on using Programming Software Version 3.00

New format SD/MMC card on the Mac or PC

This video applies to Yourbell SD/MMC (DYB2003) purchased After May 2015"

Click on the Video link.

Audacity Tutorial

Go to the line labeled

"Audacity Example Video"

Click on the Video link.

Hardware

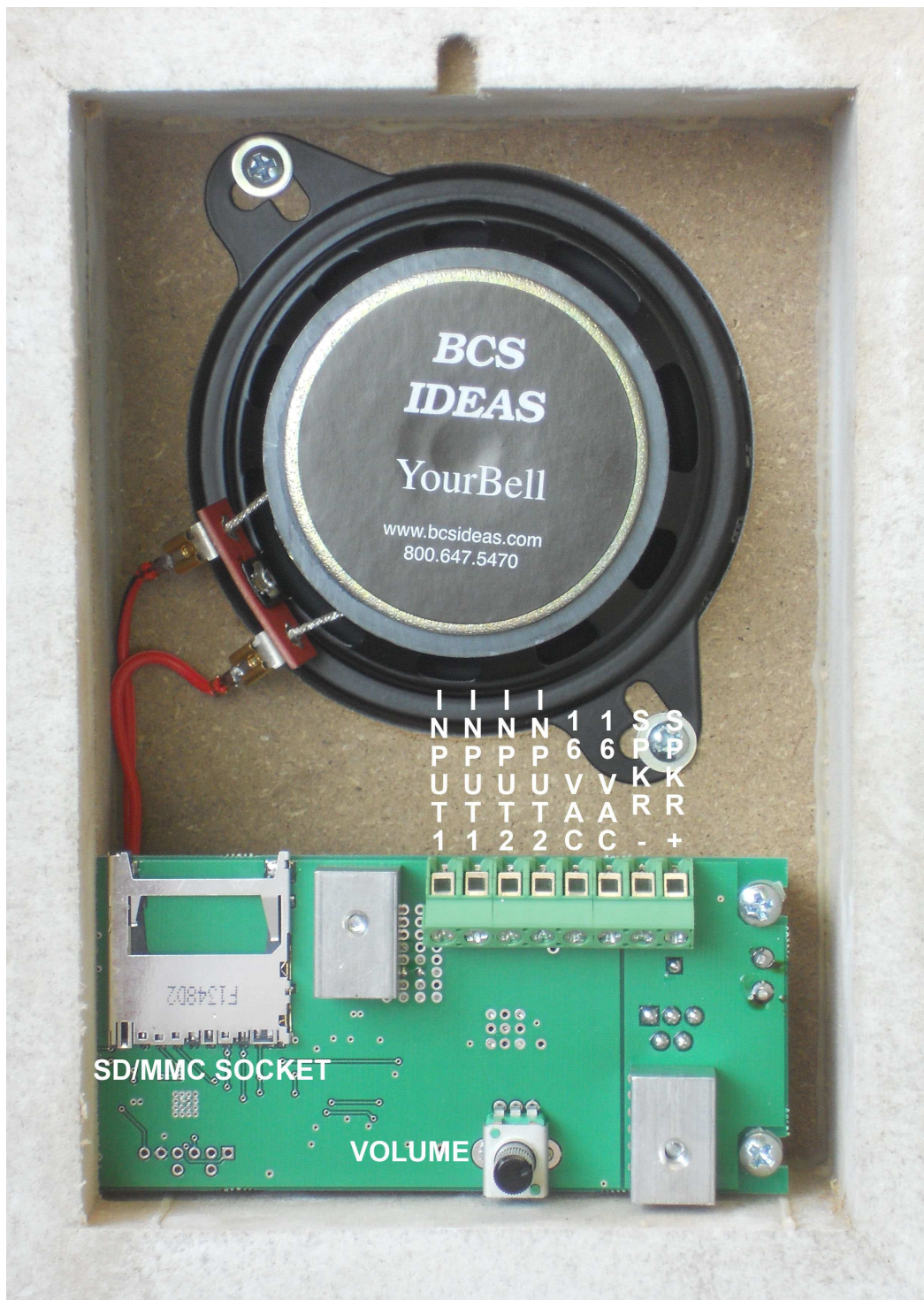


Figure 2 – Hardware Over View

Button Inputs

Each input can be set to respond to a NO (normally open) or NC (normally closed) button. This is set in the **DYB2xxx_Programmer** software.

Input1 is used to select a season/occasion. The YourBell can have 24 seasons/occasions. This means a different season/occasion could be played every half month. Select the season/occasion to play using the following steps.

1. Press the door button wired to Input1.
2. Release the button. The YourBell should start to play.
3. Before the sound file finishes press and hold the door button wired to Input1. When the sound file finishes you will hear the Road Runner "Meep Meep" sound. Release the button.
4. Press the button 2 more times. Each time you will hear "Meep Meep". This will put the YourBell into the List select mode. You have a maximum of approximately 4 seconds between button presses. Longer delay will return the YourBell to play mode.
5. Press the button again and you will hear a computer voice say "One". Press it again and it will say "Two". This will continue until it reached the end of the List numbers and go back to "One".
6. Press the button until the number of the desired List is announced. Wait several seconds until "Where's the Kaboom?" is played. The new List has been chosen.

Volume Control

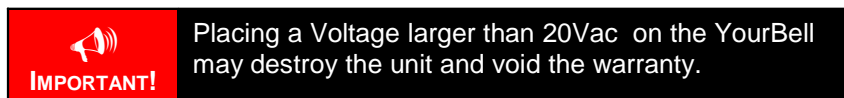
Use this potentiometer to control the sound output levels. This will control the built in speaker and any satellite speakers that are connected.

Satellite Speakers

This connector allows for the driving of external speakers. It can drive either one 4 ohm or two 8 ohm speakers. The polarity is shown on Figure 3.

Power Inputs

The YourBell was designed to be powered from the doorbell transformer provided the voltage is 14Vac – 20Vac. The YourBell requires both transformer wires to operate correctly. See figures 3 - 6 for the correct wiring of the YourBell. The preferred wiring scenario is shown in figures 3 or 4 and is recommended for new home installations.



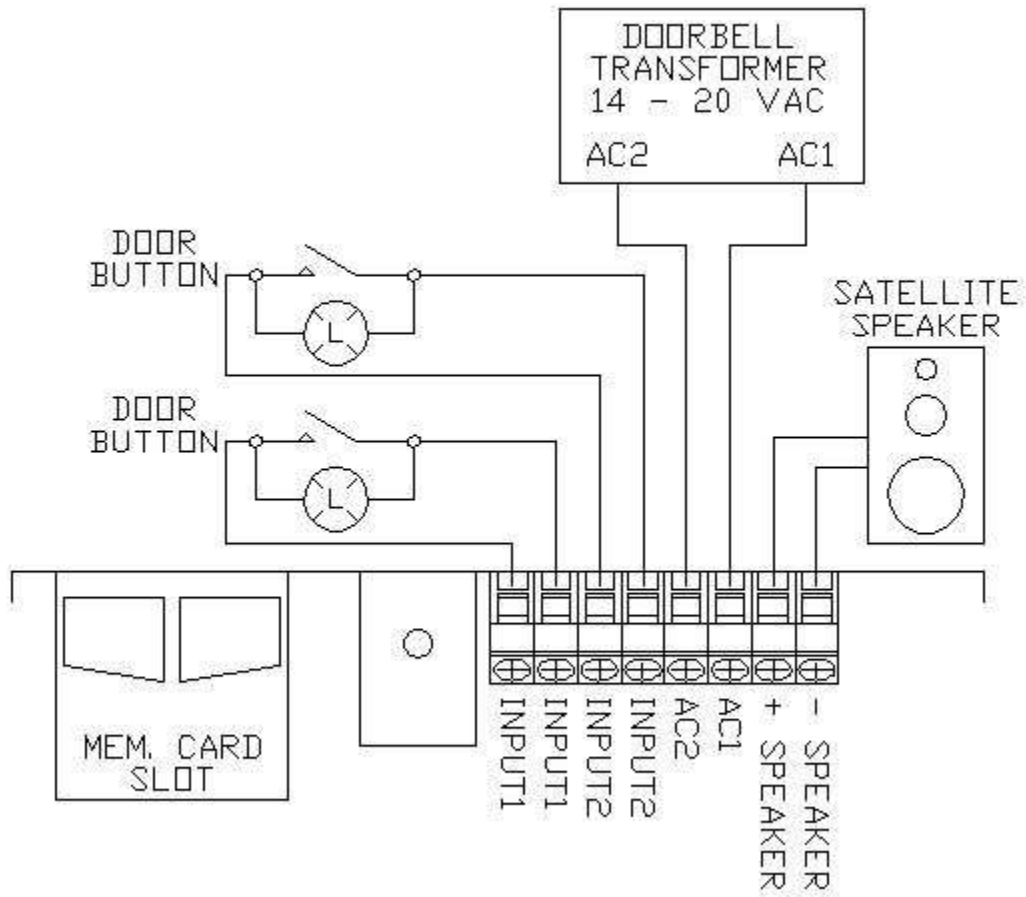


Figure 3 – Preferred Wiring – All Possible Components

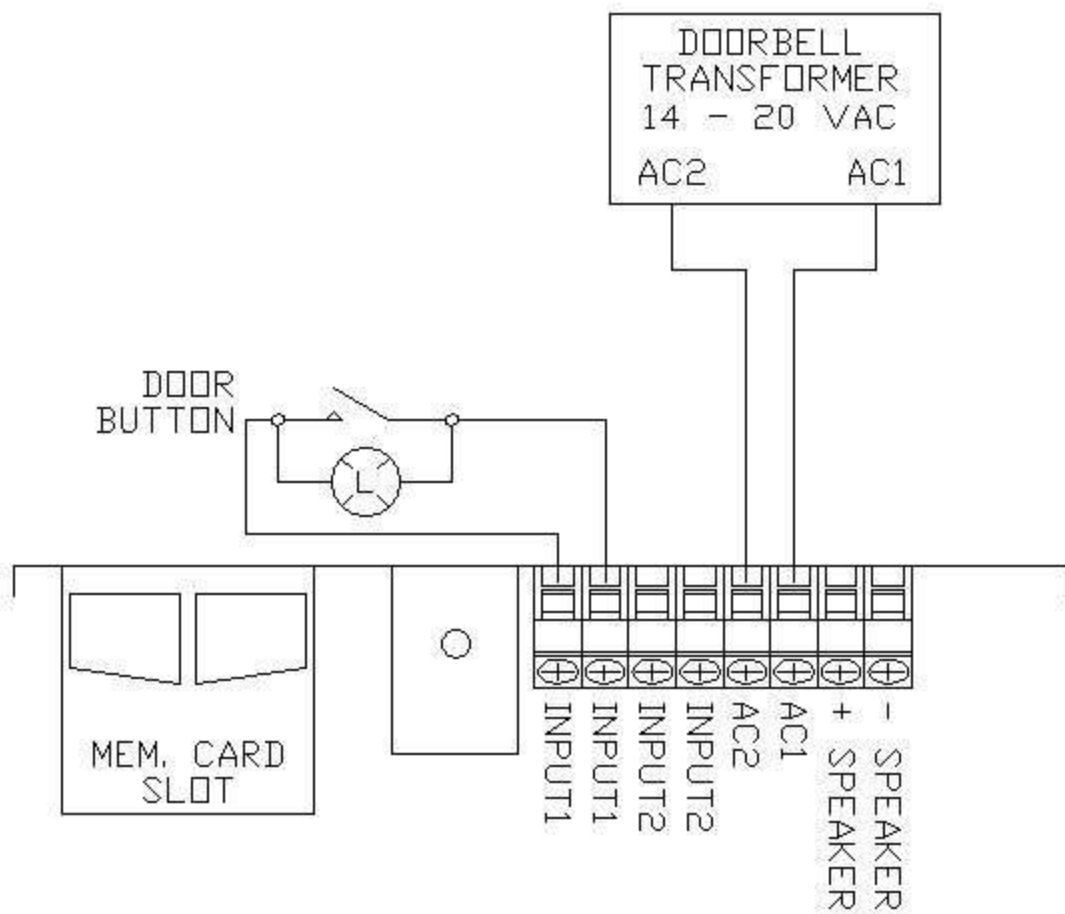


Figure 4 – Preferred Wiring – 1 Button Input

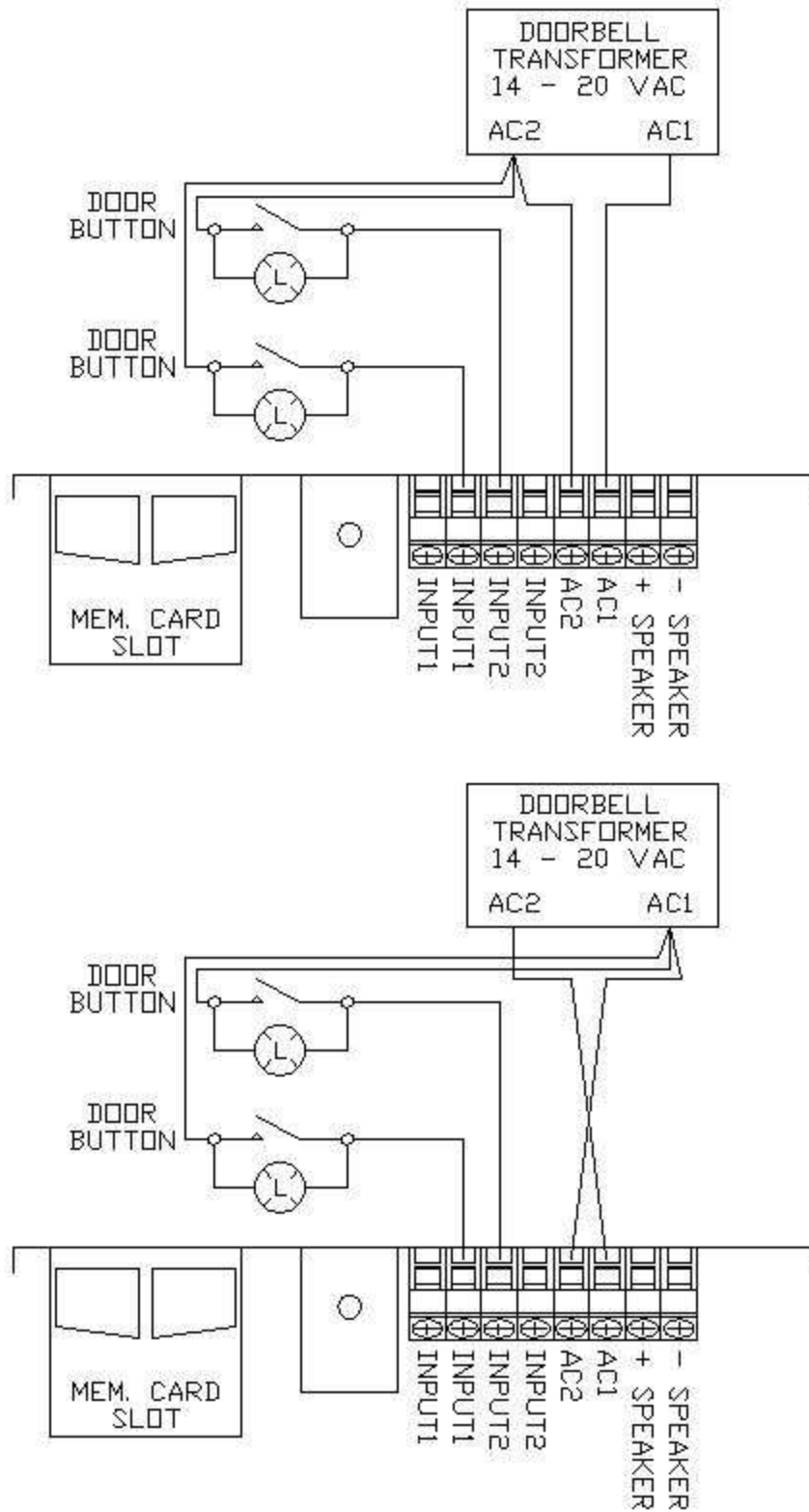


Figure 5 – Single Button Wire – 2 Button Input

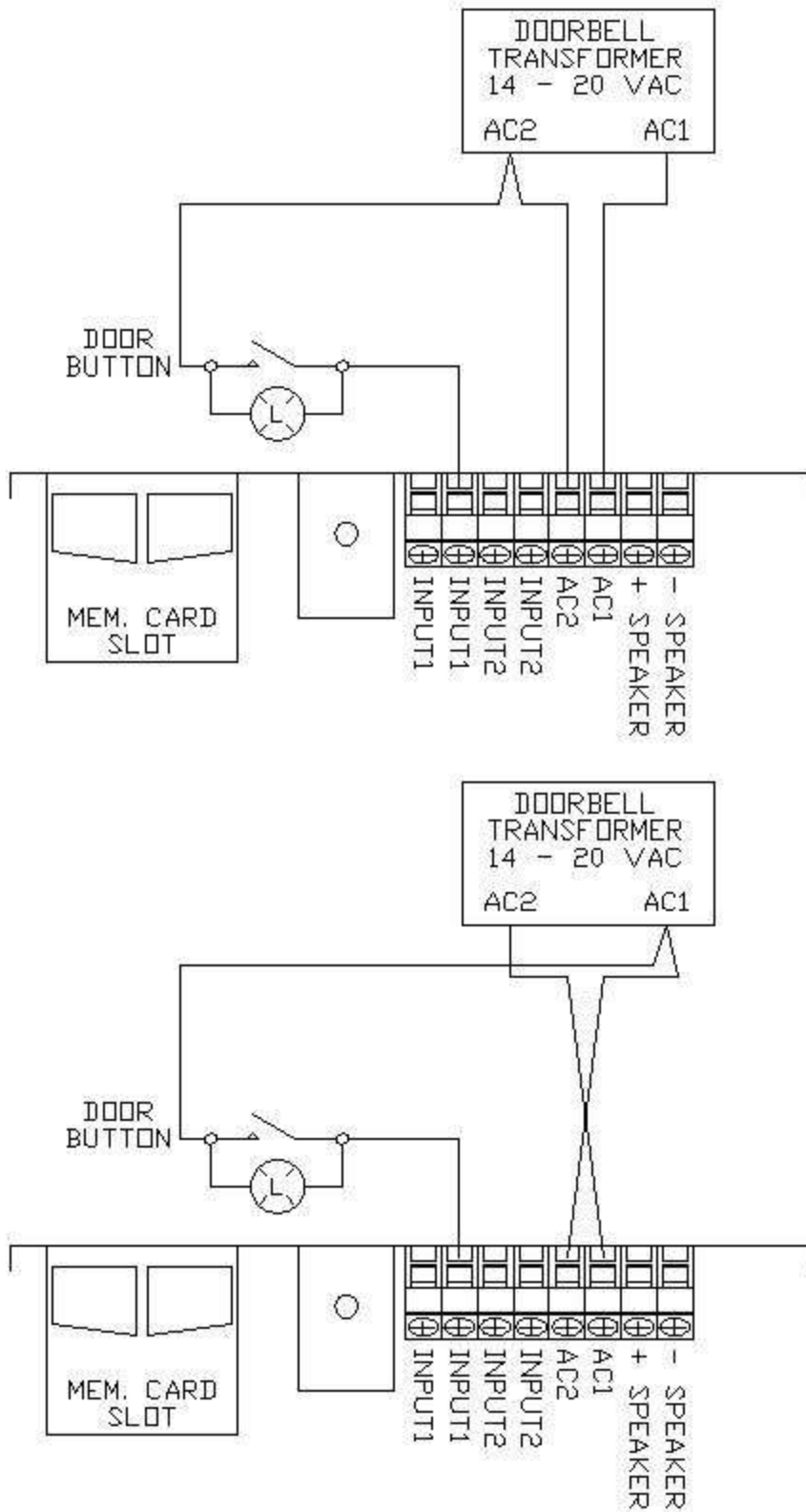


Figure 6 – Single Button Wire – 1 Button Input

Electrical Description

Absolute Maximum Ratings		
Parameter	Value	Units
Rated Input Voltage	20	Vac
Measured Input Voltage	28	Vac
Current - Active	1000	mA
Amplifier Load	2	Ohms

Electrical Characteristics				
Parameter	Min	Typ	Max	Units
Input Voltage	14	16	20	Vac
Current - Idle	60	80	100	mA
Current - Active	120		1000	mA
Button Input Isolation Voltage			2500	V(rms)

Warranty

The YourBell is warranted for 1 year. If within the first year of ownership the YourBell fails while being used within the specifications the unit will be replaced with a new one. The user will be responsible for shipping the old unit back to BCS Ideas Corporation. If it is determined that the board has been misused in any way the warranty will be void.



www.bcsideas.com

General Inquiries
info@bcsideas.com

Sales Information
sales@bcsideas.com

Product Support or Recommendations
support@bcsideas.com